

A black and yellow Gigantex carbon wheelchair is positioned on a dirt trail overlooking a vast mountain landscape. The wheelchair features a black frame with yellow accents on the front fork and the 'GIGANTEX' brand name printed vertically on the front leg. It has a black seat, backrest, and large rear wheels with black tires. The background shows a dramatic mountain range with steep, rocky slopes and a layer of white clouds at the base. The sun is low in the sky, creating a warm, golden glow and casting long shadows. The foreground is filled with dense, bright yellow wildflowers.

GIGANTEX

Carbon Wheelchairs

GIGANTEX is a carbon product manufacturing company located in Taiwan. Since its foundation in 1998, it has brought innovative products to the bicycle market such as carbon crank sets, ergonomic carbon road bars, carbon spoke wheels, etc. Following the same spirit of innovation to enhance the performance of athletes, it is moving to bring a series of carbon fiber wheelchairs to improve the quality of lives for the needed people.

The advantages of GIGANTEX carbon fiber wheelchair over the commonly the metal built wheelchair are:

1. Weight: Average lighter by 30% than its counterparts.
2. Sturdy: ISO7176 test protocol verified
3. Performance: efficient and comfort by frame design.
4. Aesthetic beautiful: Can be formed to be any shape and ergonomically.
5. Affordable: The most affordable carbon wheelchair in the market.
6. Environment Friendly: Made by the recyclable carbon/epoxy composite material.



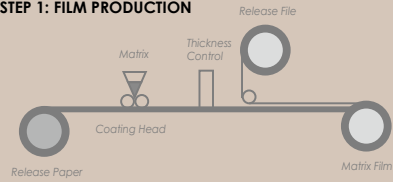


CONTENT

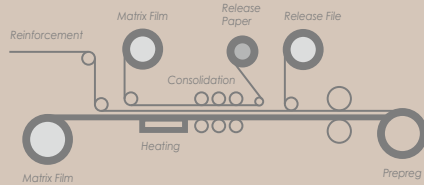
Preface	01-02
Factories and Technologies	03-04
MF012 Product Description	05-06
MF015 Product Description	07-08
MF025 Product Description	09-10
Wheelchair carbon wheels and other products	11-14
Wheelchair Technical Information and Specifications	15-17



■ STEP 1: FILM PRODUCTION



■ STEP 2: FILM TRANSFER



TECHNOLOGY FAMILIES

At GIGANTEX, we consider the quality is a major factor to continue our growth and success. For this concept, we have built the state-of-art composite manufacturing facilities, we keep our key and experienced employees to manage the R&D and to monitor production process, we strictly execute ISO 9001-2015 and ISO 13485-2016 system on daily basis which is supervised by our experienced QA staffs.

And, to extend our quality control, we have moved further to do vertical integration. In 2010, we built a prepreg process line in our second factory. This arrangement has enabled us to cut the prepreg cost by 20% compared from outsourcing it which we used to do before. Furthermore, it gives us more freedom to make whatever specifications, from FAW 50 to 200 grams and different types of carbon fibers, we need to precisely design the laminations. Of course, the most essential part is that we are able to control the quality of our critical raw material, the carbon fiber prepreg, by doing it in house.



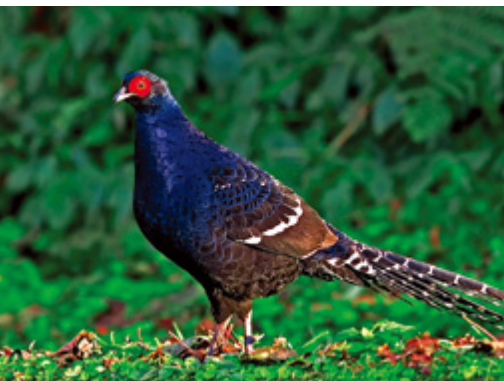
MF012

Heavy Duty & Caring Carbon Wheelchair

Weight: 9.5 kg*

Travel weight: 7.0kg

(* Includes: wheelchair frame set,
front fork/guide wheel, rear wheel)



易可收[®]
EzCiclo

made of recyclable carbon/epoxy material



Adjustable center of gravity.

Extra support beams hidden under the main frame help to lower the center of gravity and also increase the stability.



Push handles.



Detachable anti-tilt device helps the user to accustom this superlight weight wheelchair at the initial use.



Full carbon fiber wheelchair with rapid folding system.

"H" type folding structure, sturdy and convenient.



Green

Blue

Red

Yellow

MF015

Super Light Active Carbon Wheelchair

Weight: 8 kg*

Travel weight: 5.5kg

(* Includes: wheelchair frame set,
front fork/guide wheel, rear wheel)



易可收
EzCiclo

made of recyclable carbon/epoxy material



Double axles



Agile guide wheel

The wheel angle can be adjusted into 0° 2° 4° upon request.

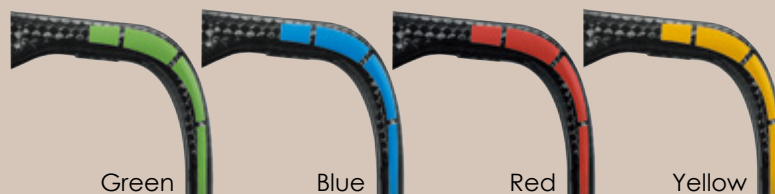


Detachable anti-tilt device as an option unit



Foldable seat back

Unique back support positioning system provides more lean back selections, 90 and 100 degree.



Green

Blue

Red

Yellow

MF025

Carry Around Carbon Wheelchair

Weight: 9 kg*

Travel weight: 6.5kg

(* Includes: wheelchair frame set,
front fork/guide wheel, rear wheel)



易可收
EzCiclo

made of recyclable carbon/epoxy material



**Full carbon fiber wheelchair
with rapid folding system.**
"H" type folding structure,
sturdy and convenient.



Green

Blue

Red

Yellow



WH269



24" Alloy wheels
Weight : 1800g



WH272



24" Carbon/Alloy wheels
Weight : 1750g

This patented wheel combines alloy and carbon materials and is molded in one-piece. It gives the wheel set a smooth and nice touch..

易可收[®]
EzCiclo

made of recyclable carbon/epoxy material

WH277



24" Carbon three spoke wheels
Weight : 2000g

It is not only a conventional tri-spoke carbon wheel design but also the lightest one among its peers. Standard or customized handrail can be fitted to give different grab feels.

WH299



易可收[®]
EzCiclo
made of recyclable
carbon/epoxy material

24" Carbon spoke wheels
Weight : 1400g

A patented iF Design awarded carbon spoke and hub integrated design provides a light weight, elegant , smooth drive yet durable wheelset for wheelchair users.



OF018

Length : 76 to 92cm

Finish : 12K

Weight : 100g

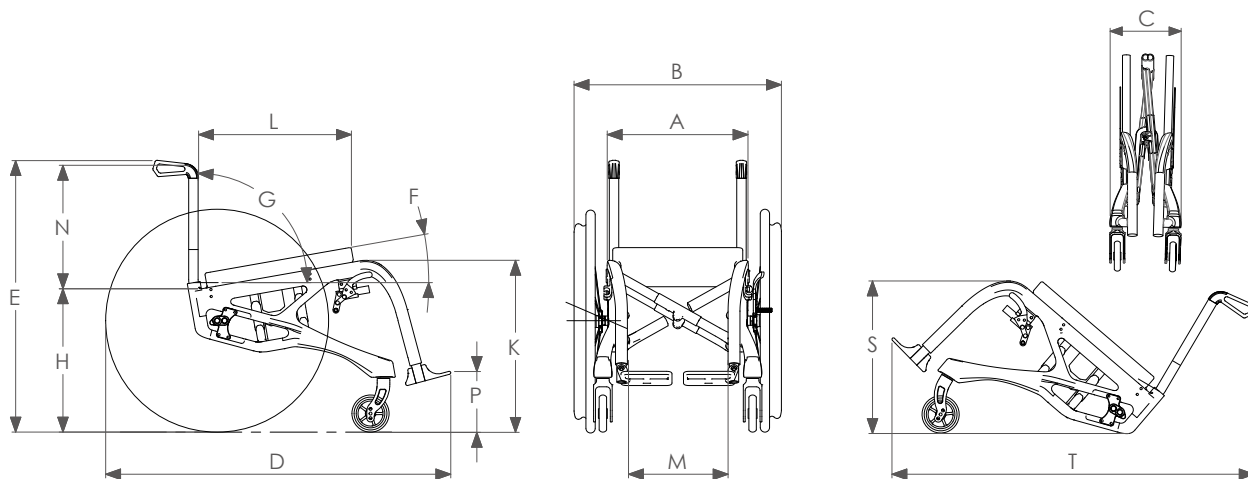


OF039

Finish : 12K

Weight : 180g

MF012

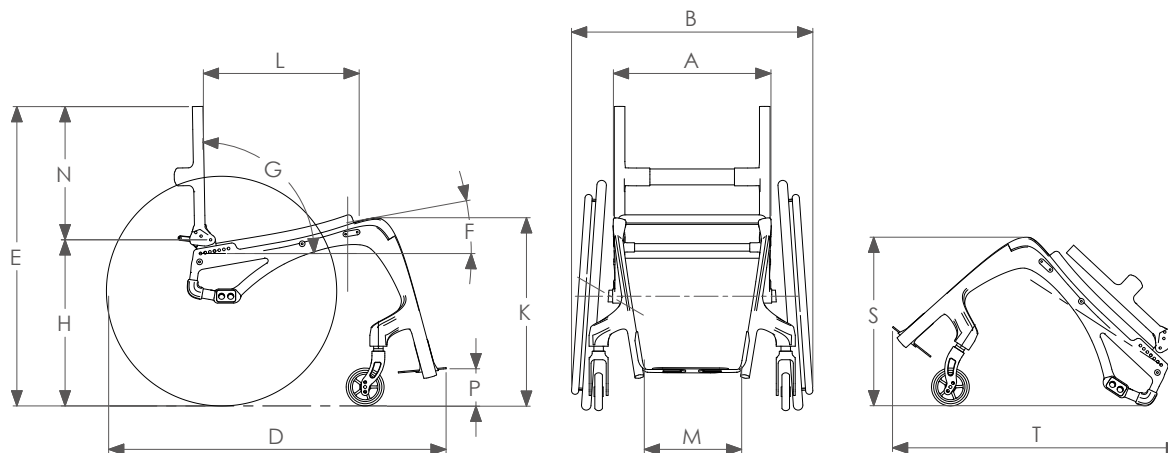


MF012 SPECIFICATION:

Specification		14"	15"	16"	17"	18"
Castors		4" & 5"				
Rear wheel		24"				
A	Seat Width	350	375	400	425	450
B	Unfolding width	573	598	620	633	645
C	Folding Width	320				
D	Total Length	900~930				
E	Total Height	730~800				
F	Seat Angle	8°				
G	Back Angle	90°~100° (in increments of 10°)				
H	Seat Height Rear	386				
K	Seat Height Front	460				
L	Seat Depth	400				
M	Inner Width	418	445	470	496	520
N	Back Height	300 \ 320 \ 360				
P	Pedal Height	50.5~125.5 (in increments of 15mm)				
S	Frame Height	410				
T	Frame Length	960				
Maximum Load		100 kg				



MF015

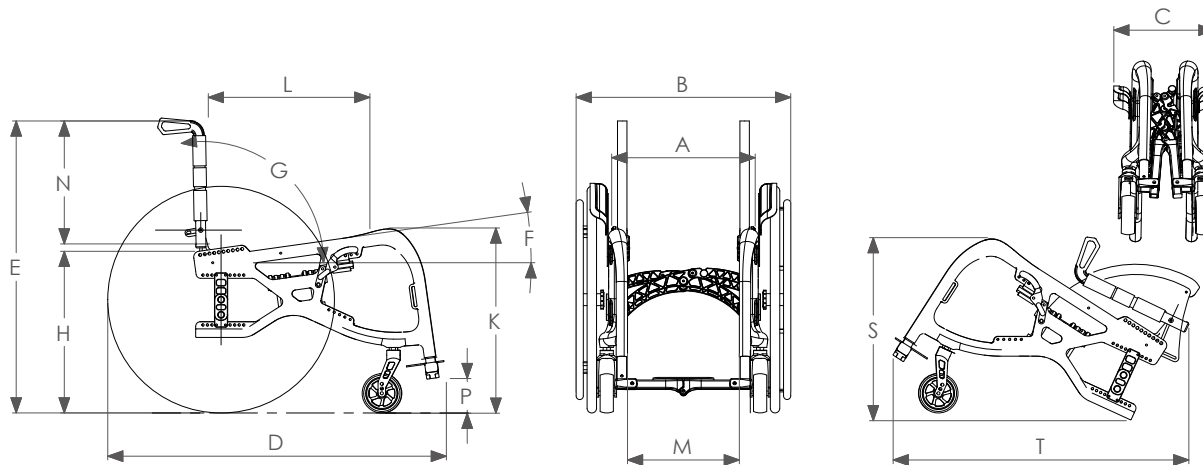


MF015 SPECIFICATION:

Specification		14"	15"	16"	17"	18"
Castors		4" & 5"				
Rear wheel		24"(0°, 2°, 4°)				
A	Seat Width	350	375	400	425	450
B	Unfolding width	600	625	650	675	700
C	Folding Width					
D	Total Length	870				
E	Total Height	740~800				
F	Seat Angle	10°				
G	Back Angle	90°~100° (in increments of 10°)				
H	Seat Height Rear	415				
K	Seat Height Front	500				
L	Seat Depth	375~400 (in increments of 12mm)				
M	Inner Width	210	235	260	285	310
N	Back Height	300 \ 320 \ 360				
P	Pedal Height	69 ~ 116 (in increments of 10mm)				
S	Frame Height	445				
T	Frame Length	750				
Maximun Load		100 kg				



MF025



MF025 SPECIFICATION:

Specification		14"	16"	18"
Castors		4"		
Rear wheel		24"		
A	Seat Width	330	380	430
B	Unfolding width	520	570	620
C	Folding Width	320		
D	Total Length	940		
E	Total Height	775		
F	Seat Angle	8°		
G	Back Angle	90°~100° (in increments of 10°)		
H	Seat Height Rear	430		
K	Seat Height Front	490		
L	Seat Depth	348~428 (in increments of 12mm)		
M	Inner Width	246	296	346
N	Back Height	320 \ 350 \ 380		
P	Pedal Height	80~140 (in increments of 15mm)		
S	Frame Height	485		
T	Frame Length	750		
Maximun Load		100 kg		



A black and yellow wheelchair is positioned on a dirt path that winds through a vast, green mountain landscape. The hills are covered in dense, low-lying vegetation, and the sky above is a deep blue with scattered white clouds. In the distance, a body of water is visible between the mountain ranges. The wheelchair is a modern, lightweight model with large rear wheels and smaller front casters. It is facing away from the viewer, looking down the path into the distance.

It is not only friendly to the users but also to the environment. Our wheelchairs and other medical products are all made of the recyclable carbon/epoxy composite materials.



GIGANTEX COMPOSITE TECHNOLOGIES CO., LTD.
EQUINOX COMPOSITE TECHNOLOGIES CO., LTD.

NO.36, Lane 620, Fuxing Rd., Beidou Town,
Changhua County 52147, Taiwan.

Tel : 886-4-887-3818

Fax : 886-4-887-3810

E-mail : gigantex@gigantex.com.tw

<https://www.gigantex.com.tw>



Product Specifications are subject to
change without notice.

